
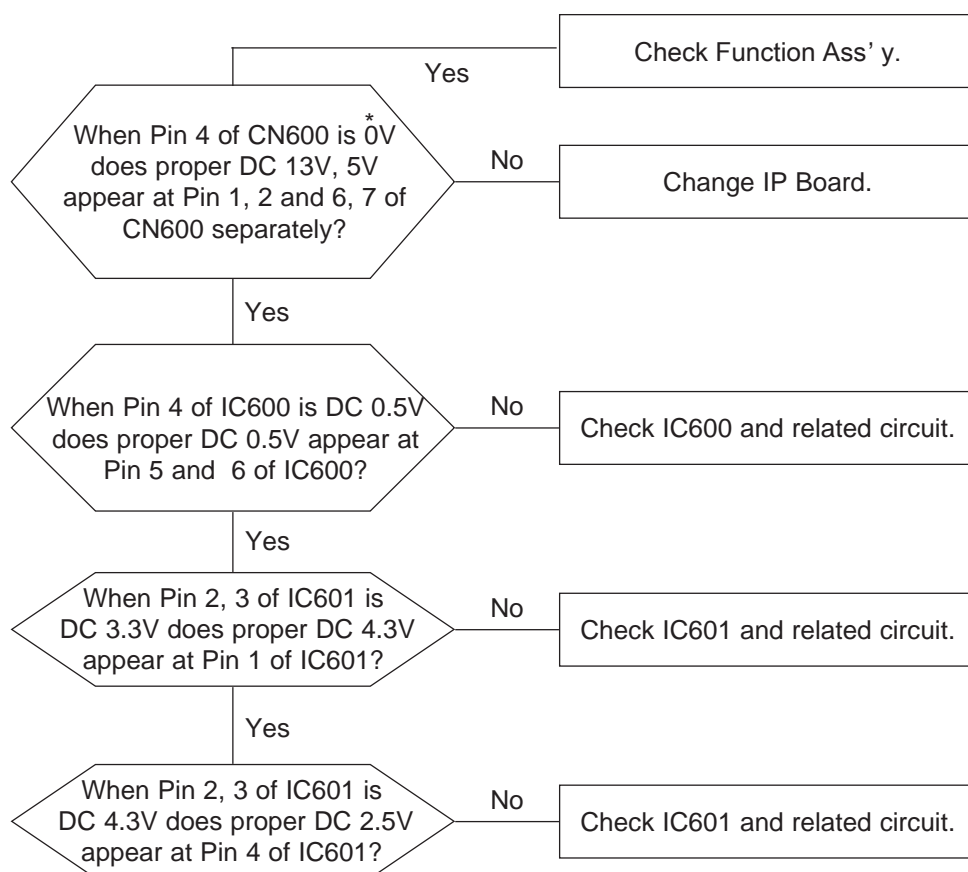


4 Troubleshooting

- Notes:
- Before troubleshooting, setup the PC's display as below.
 - Resolution: 1280 x 1024
 - H-frequency: 64 kHz
 - V-frequency: 60 Hz
 - If no picture appears, make sure the power cord is correctly connected.
 - Check the following circuits.
 - No raster appears: Function PBA, Main PBA, I/P PBA
 - 5V develop but no screen: Main PBA
 - 5V does not develop: I/P PBA
 - If you push and hold the " (Enter/Source)" button for more than 5 seconds, the monitor automatically returns to the factory preset.

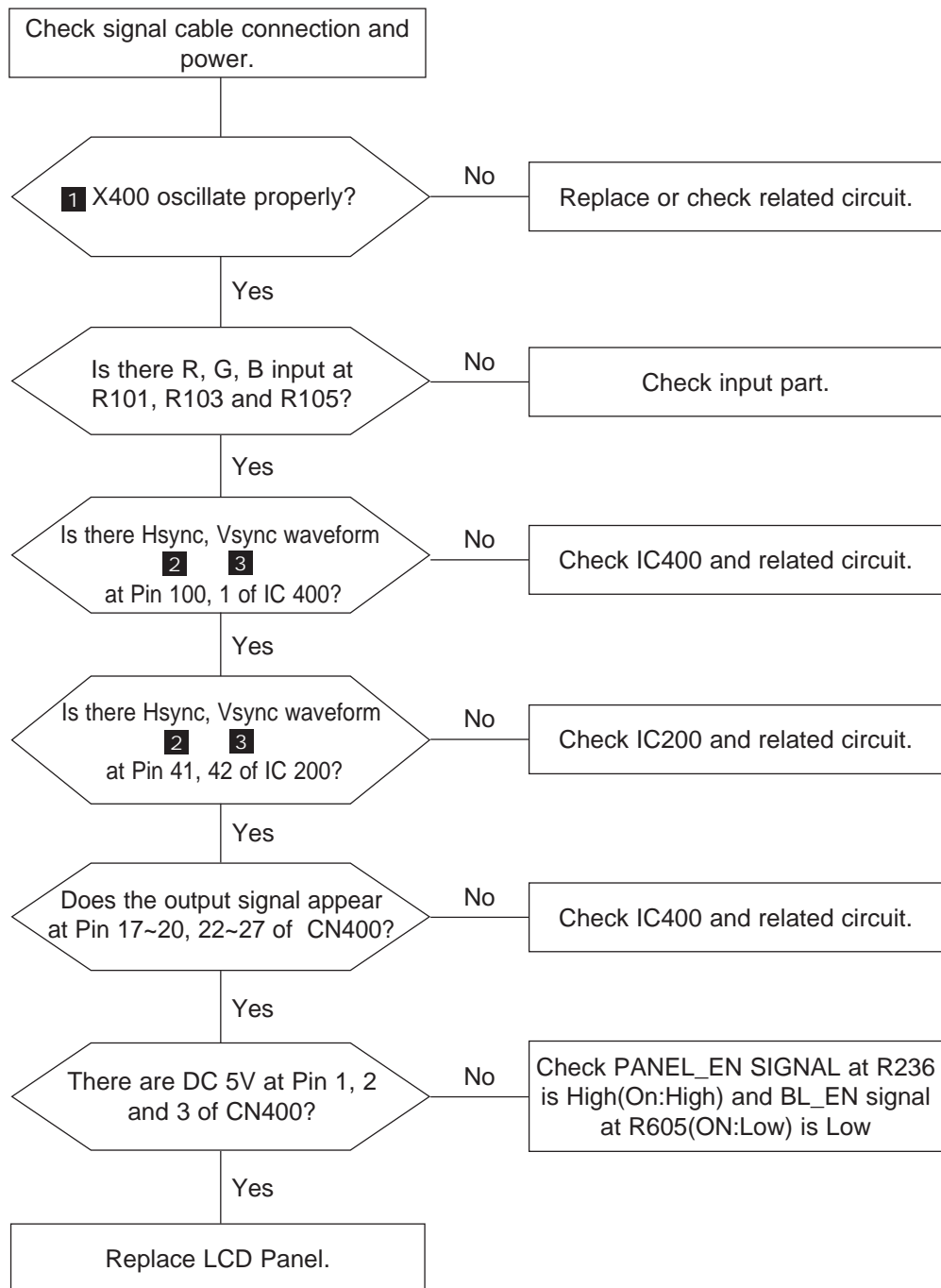
4-1 No Power(LHA17DS/LHA19DS)



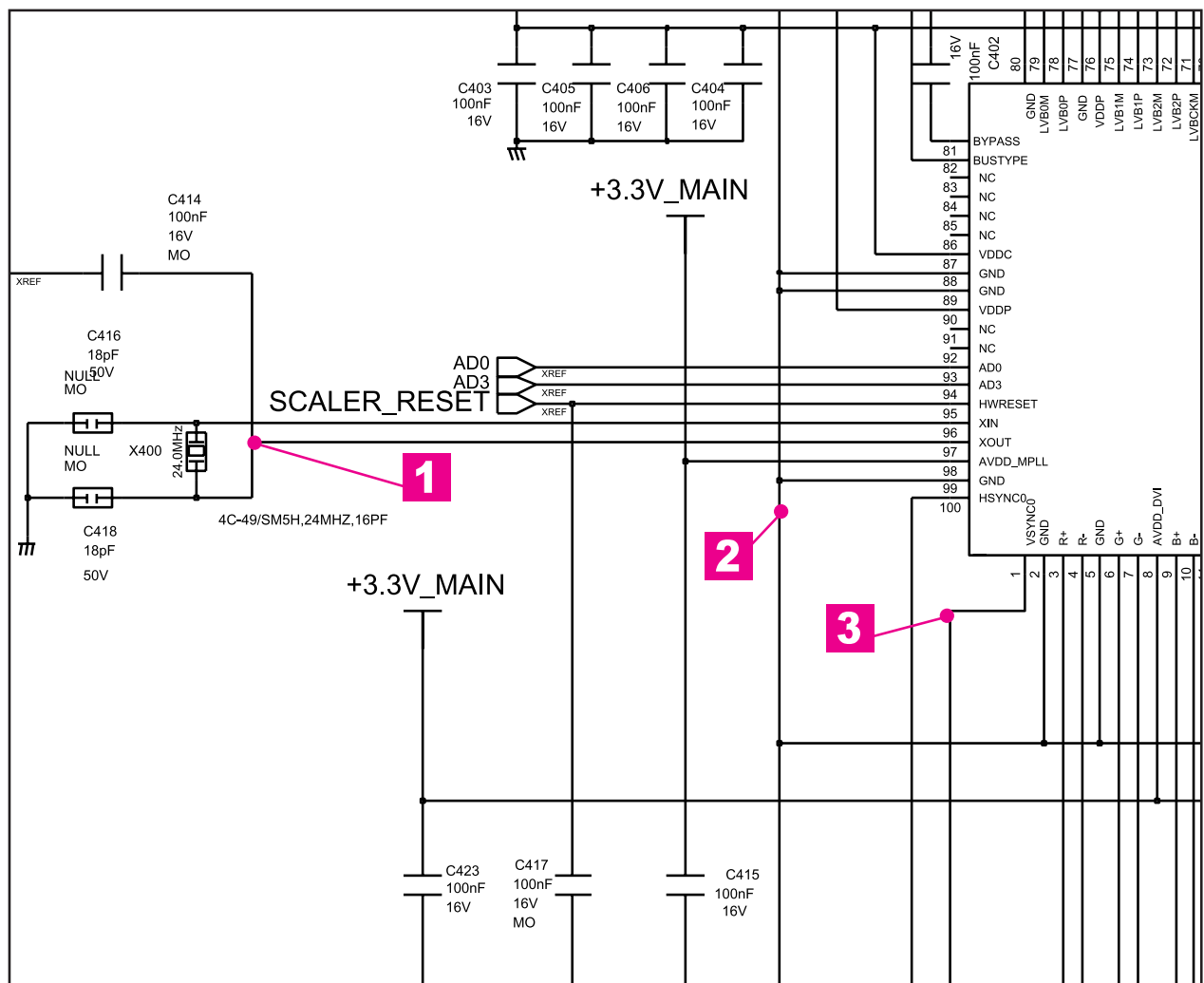
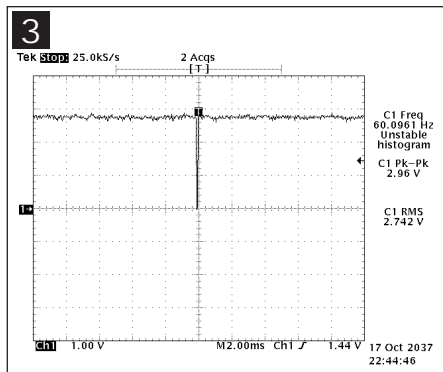
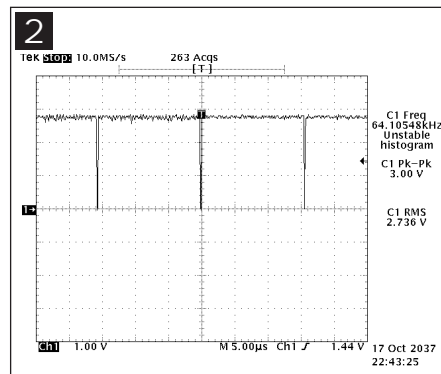
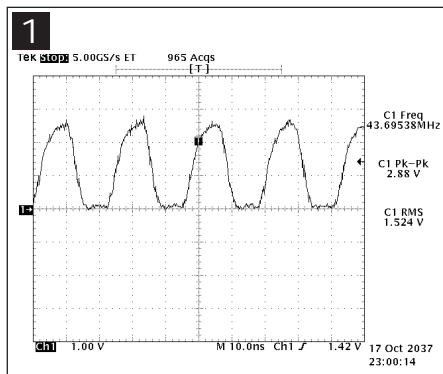
* 0V means power on state.

When the monitor work well except DPMS and power switch off,
0V should be applied to number 4 of CN600.

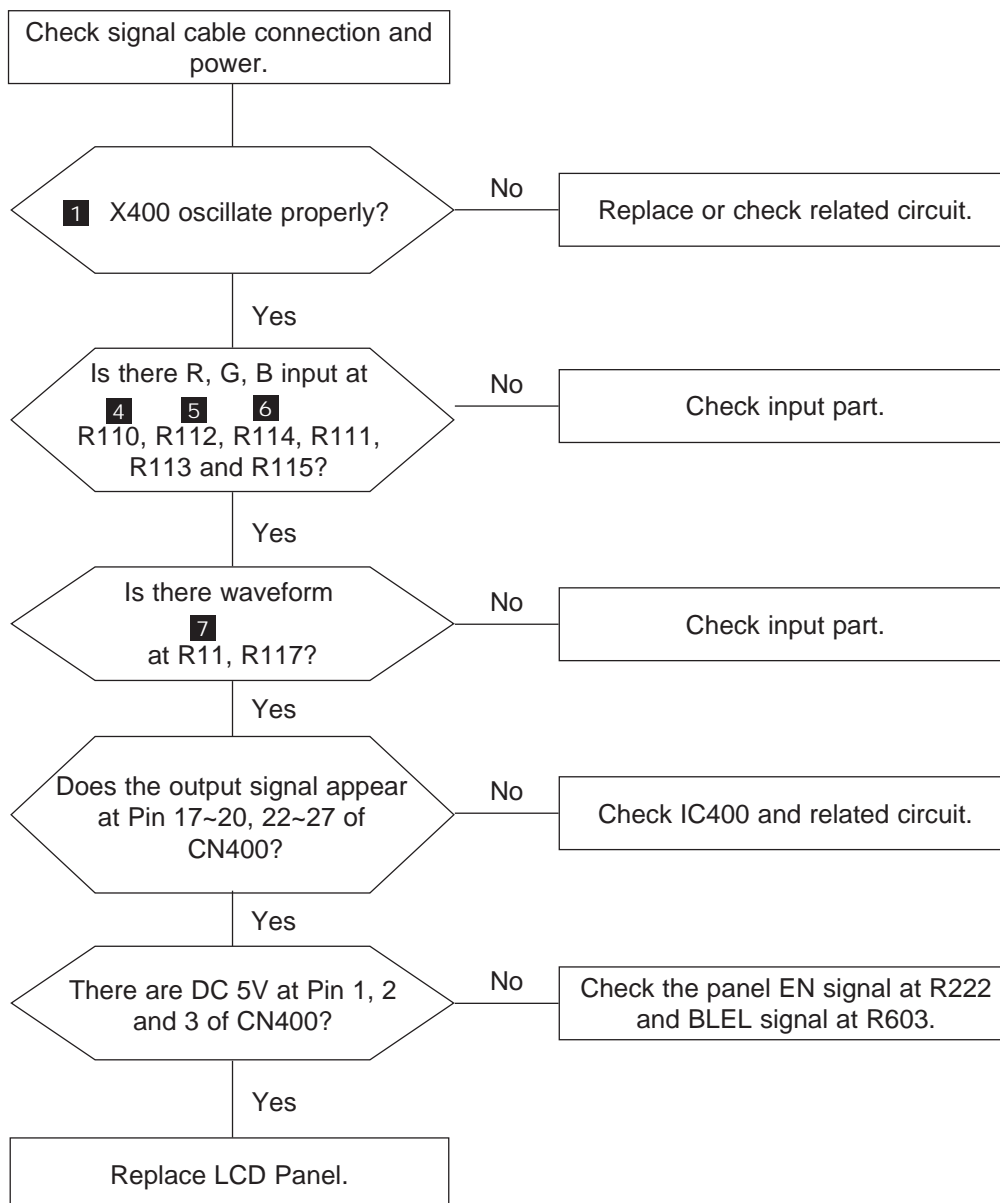
4-2 No Video (ANALOG)



WAVEFORMS



4-3 No Video (DIGITAL)



WAVEFORMS

